



2020/2021
ANNUAL
REPORT



Joining Families

Support Services



ANNUAL REPORT 2020/2021

Table of Contents

1. About Joining Families Support Services:	3
2. Acknowledgements	4
5. Message Form the General Manager:	5
6. Management Committee	6
5. Strategic Goals	7
6. Programs and Projects	8
7. Upcoming Projects & Programs	10
8. Organisational Governance:	12
9. Financial Statements:	13

1. About Joining Families Support Services:

Joining Families Support Services:

Joining Families Support Services is an independent community based multicultural organisation. We aim to identify the needs of, and improve settlement services to, migrants, refugees and emerging communities in the Oakhurst and surrounding suburbs and Blacktown Local Government Area in general.

Joining Families Support Services' main objective is to build resilient communities by providing appropriate orientation, information and referral to our target groups by:

- Assisting them with their settlement needs.
- Addressing their issues as they arise.
- Providing them with access to mainstream services and resources.

In order to achieve these aims and objectives Joining Families Support Services:

- Provides support and assistance to various diverse migrant and refugee groups in developing activities such as providing space and office facilities; assistance to seek and secure funding; and organise cultural events.
- Joining Families Support Services also works with government and non- government services by organising events, activities, programs, classes, seminars, networks of services and resources related to the needs of migrants, refugees and new and emerging communities.
- Provides office space for other specialist services to outreach in the area.
- Work with and develop opportunities for clients, volunteers and student placements to access information sessions, workshops, classes and seminars that are related to their settlement needs and orientation; involvement in relevant groups; and our computer lab.

2. Acknowledgements

Volunteers:

Joining Families Support Services recruits and supports volunteers every year. Our volunteers bring with them different skills and expertise and assist staff with reception duties, facilitate groups and classes and also assist with community celebrations and events.

Volunteering at Joining Families Support Services is also an opportunity for newly arrived individuals who are looking at entering the Australian workforce. It is a practical way to be introduced to Australian workplace practices and culture; gain skills that can be included on their Resume as 'Local experience'; also proven to be means to positive settlement.

Thank you to all our dedicated and wonderful volunteers – what you offer every day is priceless. We would also like to acknowledge all those volunteers who were with us last year and have moved on.

Student placement

Joining Families Support Services provides TAFE, and other, students with work experience opportunities to help them gain valuable practical skills and relevant placement hours to their area of studies. Students gain experience in a range of different areas such as reception and administration, project work, case work, community development, organising community events and programs, youth work, etc.

Partnerships, Supporters and Media:

Joining Families Support Services networks and collaborates with other services in the Blacktown, Penrith and Hawkesbury Local Government Areas to deliver the wide range and complex services required by the community.

By working closely with such partners, we aim to minimise unnecessary client movements between organisations and make relevant referrals and advocacy on their behalf. Our partners and supporters consist of various specialised agencies, non- government and government organisations, charities, local political representatives, community organisations, local and community media as well as individuals. On behalf of our clients, the Management Committee and staff we would like to thank all our partners and supporters for their cooperation.

5. Message Form the General Manager:

Welcome to the 1st annual report from Joining Families Support Services, where we are always happy to help. I am honoured to be the General manager of such an exciting and moving organisation. As the Manager I am looking forwards to witnessing this organisation progress and expand, as well as assist, aid and provide services to the underprivileged.

At Joining Families Support Services, The Management Committee have been working hard with staff and management to ensure we develop and maintain the most effective JFSS possible. This will be accomplished through the implementation of various strategic objectives to be developed in our upcoming Strategic Plan 2021-2025.

At JFSS we are thankful for all our board members as their contributions have resulted in a greater JFSS and has allowed for the acquisition of new volunteer staff members. These staff members provide a different variety of skills, experience and backgrounds which only make JFSS better equipped to address the needs of our community.

I extent a warm welcome to our newest volunteers Benny Muyambo and Isaac Wapeke, welcome to the JFSS family.

Joining Families Support Services also continues to build strong partnerships with other key services provides in our local community to enable us to better meet the needs of our community. We continue to seek partnerships with various city council's and other organisational groups. These partnerships with aid us in the conduction of upcoming events such as 20210 Harmony Day and Refugee Day.

We also continue our work on specific projects to improve the access of our community to services, through partnerships with other agencies.

I would like to extend a very big thank you to all of our staff members for all of their patience and support through the establishment of this organisation. I would also like to acknowledge the commitment and hard work of the members of our Management Committee, their dedication is the foundation of this organisation.

I look forward to the bright future ahead of Joining Families Support Services.

6. Management Committee

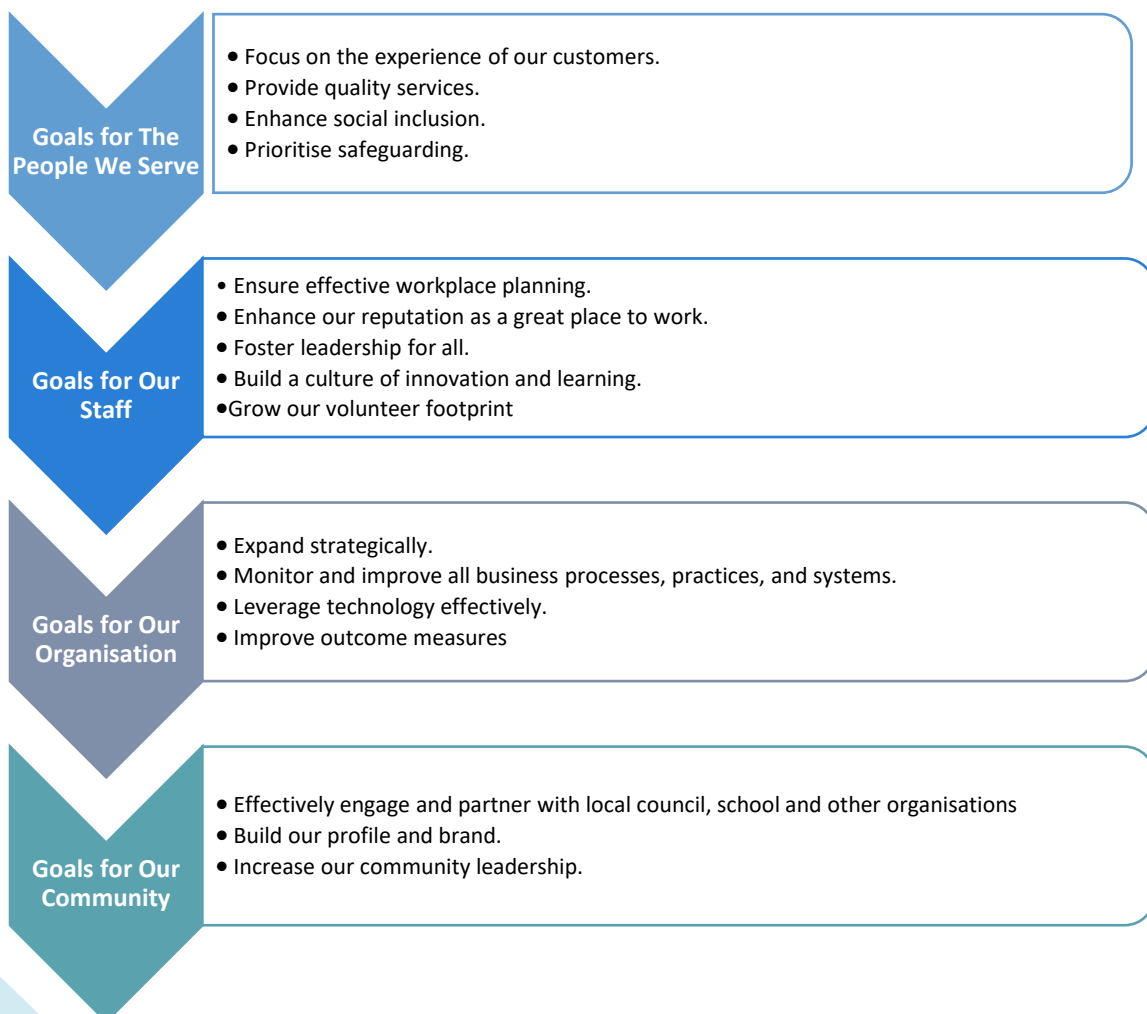
	Name	Phone	Email	Address	Qualification	Position
1	Isaac Kisimba	0421 653 673	kisisaac@yahoo.com.au	97 Fyfe Road, Kellyville Ridge NSW 2155	Bachelor's Degree in social science & Master's degree in social work	Chairperson/ Public Officer General Manager
2	Benny Muyambo	0435 399 441	muyambo777@gmail.com	5 Saturn Place, Doonside NSW 2767	current Bachelor of Psychology	Vice Chairperson
3	Nadine Muyambo	0449874730	nadinemuyambo2@gmail.com	5 Saturn Place Doonside NSW 2767	Current Bachelor of Social Work	Secretary
3	Justine Ndayi	0412 198 851	justinendayi1978@gmail.com	97 Fyfe Road, Kellyville Ridge NSW 2155	Bachelor's Degree in social science Diploma of Community Services Case Management	Treasurer
4	Mathew Lyn	041438869	mathewlynn@ozemail.com.au	Blue Mountains, NSW	Master of Art	Board Member
6	Astride Mukendi	0450 805 114	astridmukanya@hotmail.com	304 Edensor Road, Edensor Park NSW 2176	Diploma in Child Development	Board Member
7	Louise Whelan	0417202489	photos@loiuisewhelan.com.au		Master of Art	Board Member
8	Rose Kabanga	0422 155 209	rosekabanga2@gmail.com	304 Edensor Road, Edensor Park NSW 2176	Bachelor's Degree in education	Board Member

5. Strategic Goals

Joining Families Support Services (JFSS) Strategic plan 2021 -2025:

As stated above, Joining Families Support Services have aspirations for future events, achievements and objectives we aim to achieve in the future. These achievements are to be attained through the achievement of JFSS's strategic goals. The following are Joining Families Support Services 2020-2025 Strategic Goals. JFSS staff and board members have formulated JFSS's new Strategic Plans for 2020-2025. This will also include input from various other Stakeholders: Funding bodies, Networks, interagency, clients and supporters.

From 2021-2025, Joining Families Support Services Aims to Achieve the Following Strategic Objectives:



6. Programs and Projects

The African Christmas Dinner Night

The African Christmas Dinner Night takes place as an annual multicultural event organized by our board committee members with the financial support of the Blacktown City Council, Parramatta City Council and the Hills Shire Council. The event had attendance of more than 200 people and consisted of various culturally diverse singing, dancing and instrumental performances. The African Christmas Dinner Night serves as an opportunity for different ethnic groups to engage in various cultural activities as well as enjoy different cultural cuisines.

Homework Support Program

The Homework Support Program is an effective program that provides one-on-one tutoring services for primary and secondary school students. Numerous volunteers have already been recruited prior to the conduction of this program. This program provides stationary as well as office equipment (computer/printers) to the underprivileged who experience difficulty in attaining these services on their own. Enrolments for this program continues to increase and the portion of the community we aid continues to grow.

Settlement Services

When arriving in a new country, many new arrivals need help to an unfamiliar society and culture. Migration can be confusing and overwhelming for families. JFSS Settlement Support Program provides initial settlement assistance to immigrants, refugees, and individuals/families seeking asylum. The immediate support of newcomers is essential in ensuring a successful integration into Australian society. JFSS programs expose newly arrived individuals too various support services and groups while providing essential life and communication skills to promote and self-reliance.

NDIS Services

Joining Families Support Services is committed to meeting the needs of our clients and their families by offering NDIS services such as assistance with personal care and safety, high intensity daily personal activities, assistance with personal mobility equipment, managing client's life stages, assistance with daily personal activities such as travel/transport arrangements, specialist behaviour supports, equipment for recreation and daily life tasks in a group or shared living arrangement.

Living Skills for The Youth

Youth group information sessions on topics such as healthy relationships, nutrition, respect, values, social interactions, effective communication, legal aid, Youth Ombudsman, Drug and Alcohol, cultural diversity, etc are provided to young people to ensure the youth are brought up with adequate morals.

The Youth Outreach Program

The Youth Outreach project is a project targeted at culturally and linguistically diverse youth aged between 12-24 years old. This project aims to deliver outreach services to youth in the local public schools in the local community. Youth Consultation meetings are to be held at our community centre in Oakhurst to ensure we regularly monitor the changing needs of young people within the community. The Youth Outreach program also includes exciting activities for participants such as morning breakfasts for families, child-protection information sessions, driving safety lessons, music classes, recreational activities and sporting activities were all during school terms and school holidays.

7. Upcoming Projects & Programs

Australia Day

JFSS will hold an Australia Day event on the 26th of January 2022. The event will consist of Multicultural Life Dance performances, singing, dance, speeches from various communities, and children's activities, including Jumping Castles, Face painting, BBQ, and the Australian storytelling, the history of Aboriginal and the British, the importance of being Australian, the Australian values. Leaders from various ethnic backgrounds attended Australia Day, including the live musical Band performances, singing, African drumming, African fashion show and Sapologie and the multi-faith church choirs. With the aim to spread the message of belonging, harmony, tolerance.

COVID 19 Support Program

Joining Families Support Services (JFSS) will support the community through COVID-19 via a support program that targeted a range of issues. This will be through translating health information, interpretation services, assisting community members through linking them with appropriate services such as counselling, case management, homework support and providing food hampers to vulnerable families.

French Classes / Swahili Classes

JFSS will provide language classes for French and Swahili. Beginners and intermediate classes for both French and Swahili will be offered online and in-person at the Joining Families Support Services office. To maintain Covid-19 restrictions, the classes will be available online through zoom, ensuring that the community of refugees and migrants stayed connected and safe.

Homework Support Program

The Homework Support Program is an effective program that provides one-on-one tutoring services for primary and secondary school students. Numerous volunteers have already been recruited prior to the conduction of this program. This program provides stationary as well as office equipment (computer/printers) to the underprivileged who experience difficulty in attaining these services on their own. Enrolments for this program continues to increase and the portion of the community we aid continues to grow.

Multicultural Youth Mentoring Program

The Multicultural Youth Mentoring Project is a project that will supports disadvantaged young people from Culturally and Linguistically Diverse Communities aged 12 - 24 living in Mount Druitt and surrounding suburbs. The program has 80 young people and youth from attending the program at the Oakhurst Neighbourhood Centre. These youth will be brought to the centre to meet mentors, counsellors, and access JFSS computer, printer, and internet.

8. Organisational Governance:

BOARD / MANAGEMENT COMMITTEE

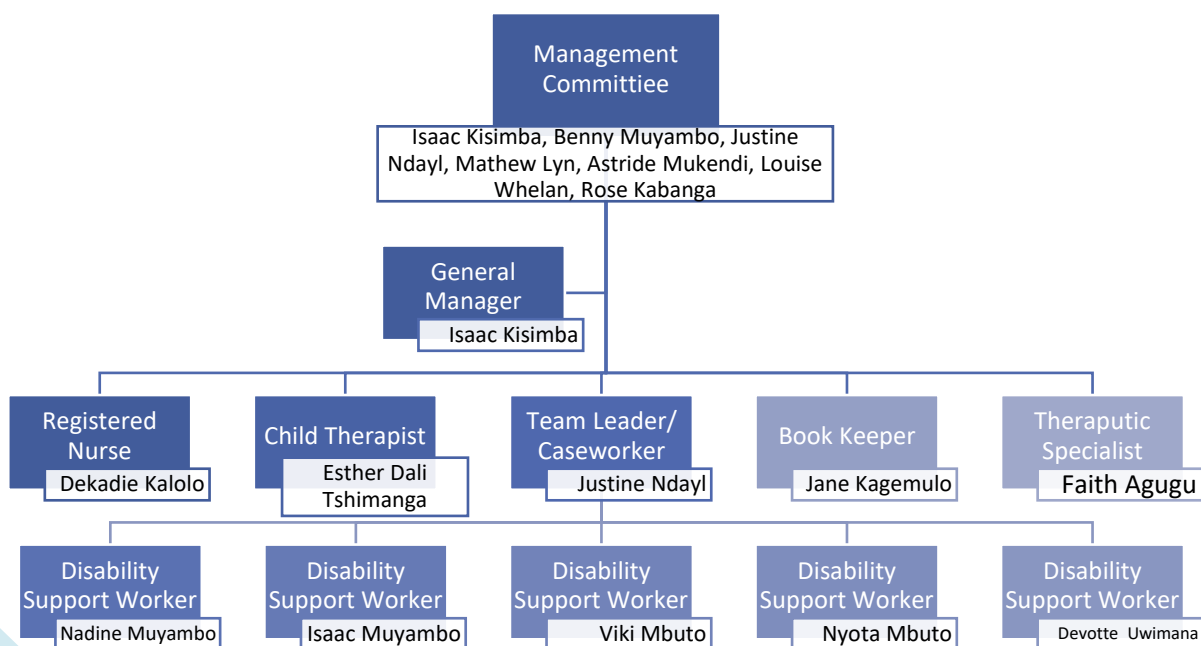
Joining Families Support Services is a non-government, community-based organisation run by its members. Members of this organisation include the staff, board members or organisational representatives who either work or live in the local area, are aware of the hardships faced and are determined towards making the community a better place for all residents and guests.

The management committee are elected each year from Joining Families Support Services membership and are known as the Management Committee (MC). The Management Committee members voluntarily manage the organisation and its governance, maintain focus on its aims and objectives; keep JFSS's vision in focus and ensure it is directed and developed towards achieving our long-term strategic goals.

On behalf of all of Joining Family Support Services, I would like to thank all of the staff members, volunteers and supporting organisation for their contributions towards this organisation over the course of the last year.

Organisational Structure

Follows is the organisational structure of Joining Families Support Services.



9 | Financial Statements

JOINING FAMILIES SUPPORT SERVICES INC.**ABN: 17 882 122 011**

Note 4: Financial Liabilities

	This Year	Last Year
NON-CURRENT		
Loan - Isaac Kisimba	13,650	0
Loan - Justine Ndayi	9,500	0
Loan - Esther Tshimanga	2,900	0
Loan - Nadine Muyambo	8,950	0
Loan - Sarah Ndaya Tshimanga	2,000	0
Loan – Dekadie Kalolo	2,100	0
Loan – Astride Mukanya Mukendi	1,225	0
Loan – Rose Kabanga	1,300	0
TOTAL NON-CURRENT	41,545	0
TOTAL	41,625	0

Note 5: Retained Surplus/(Deficit)

	This Year	Last Year
Net surplus/(deficit) attributable to members of the entity	(41,545)	0
Retained surplus (accumulated deficit) at the end of the financial year	(41,545)	0

Note 7: Employee Benefits Expenses

	This Year	Last Year
EMPLOYEE BENEFITS EXPENSES		
Workcover	412	0
TOTAL	412	0

The accompanying notes form part of these financial statements.

JOINING FAMILIES SUPPORT SERVICES INC.

ABN: 17 882 122 011

Note 8: Depreciation and Amortisation Expenses

	This Year	Last Year
DEPRECIATION AND AMORTISATION EXPENSES		
Depreciation	11,044	0
TOTAL	11,044	0

Note 9: Rental and Lease Expenses

	This Year	Last Year
RENTAL AND LEASE EXPENSES		
Rent	16,950	0
TOTAL	16,950	0

Note 10: Other Expenses

	This Year	Last Year
OTHER EXPENSES		
Admin Expenses (Minor)	58	0
Printing and Stationery	1,898	0
Subscriptions and Memberships	4,587	0
Telephone & Internet	1,214	0
Travel and Transport Cost	600	0
Website Cost	583	0
TOTAL	8,939	0

The accompanying notes form part of these financial statements.

JOINING FAMILIES SUPPORT SERVICES INC.

ABN: 17 882 122 011

**Notes to the Financial Statements
For the year ended 30 June 2021**

NOTE 11. OTHER GENERAL INFORMATION

The financial statements cover Joining Families Support Services Inc. (JFSS) as an individual entity. The financial statements are presented in Australian dollars, which is JFSS's functional and presentation currency.

JFSS is a non-profit organisation registered under Department of Fair Trading, incorporated, and domiciled in Australia. Its registered office and principal place of business are:

Registered office	Principal place of business
51 Standish Ave Oakhurst NSW 2761	51 Standish Ave Oakhurst NSW 2761

A description of the nature of the entity's operations and its principal activities are included in the committee's report, which is not part of the financial statements.

The financial statements were authorised for issue, in accordance with a resolution of committee members at AGM on 18th August 2021. The Committee have the power to amend and reissue the financial statements.

NOTE 12. CASH FLOW INFORMATION

	Note	This year	Last Year
		\$	\$
Reconciliation of cash flow from operating activities with net current year surplus			
Net current year surplus		(41,545)	-
Adjustment for:			
Depreciation and amortisation		11,044	-
Donation in kind			-
Movement in working capital:			
(Increase) decrease in tax assets		(30,501)	-
Net cash generated by operating activities		(30,501)	-

NOTE 13. CAPITAL AND LEASING COMMITMENTS

The Association did not have any capital or leasing commitments at the end of the of the financial year.

NOTE 14. CONTINGENT LIABILITIES AND CONTINGENT ASSETS

The Association did not have any contingent liability or contingent asset at the end of the financial year.

NOTE 15. EVENTS AFTER THE REPORTING PERIOD

No matters or circumstances has arisen since 30 June 2021 that has a significant effect or may significantly affect the entity's operation, the result of those operations or the entity's state of affairs in the future years.

The accompanying notes form part of these financial statements.

JOINING FAMILIES SUPPORT SERVICES INC.

ABN: 17 882 122 011

Management Committee Members' Declaration

In accordance with a resolution of the management Committee of Joining Families Support Services Inc., the committee members declare that, in their opinion:

1. The financial statements and notes, as set out on pages 7 to 17, satisfy the requirement of the Australian Charities and Not-for-profits Commission Act 2012 and:
 - a. comply with Australian Accounting Standards applicable to the Registered Entity; and
 - b. give a true and fair view of the financial position of the Registered Entity as at 30 June 2021 and of its performance for the year ended on that date.
2. There are reasonable grounds to believe that the Registered Entity will be able to pay its debts as and when they become due and payable.

This declaration is signed in accordance with subs 60.15(2) of the Australian Charities and Not-for-profits Commission Regulation 2013.



Muyambo Isaac Kisimba (Chairperson)

Aug 16, 2021

Date this day of August 2021



Nadine Muyambo (Treasurer)

JOINING FAMILIES SUPPORT SERVICES INC.

ABN: 17 882 122 011

Income and Expenditure Statement

For the year ended 30 June 2021

	This Year	This Year	Last Year
OVERHEAD EXPENSES			
Accountancy	4,200		0
Admin Expenses (Minor)	58		0
Depreciation	11,044		0
Printing and Stationery	1,898		0
Rent	16,950		0
Subscriptions and Memberships	4,587		0
Telephone & Internet	1,214		0
Travel and Transport Cost	600		0
Website Cost	583		0
Workcover	412		0
TOTAL OVERHEAD EXPENSES		(41,545)	0
NET SURPLUS/(DEFICIT)		(41,545)	0